

Tai Yin - Yan Ming pattern (III / VI) WIDE FRONT
Metal-Earth imbalance.

Treats ANY Tai Yin problems & ANY Yang Ming problems!

Any problems in the front of the body (below the eyes to the feet). Upper respiratory allergy, cold, sore throat, any issues around mouth, tonsils, thyroid, chest, asthma,

LI 3	Lu 5	constipation, diarrhoea, sinus HA below the eyes, uterus, bladder, ovaries (not male organs), obesity, weak digestion, sleep apnea, water metabolism, etc. Infertility
LI 11	Lu 9	
Sp 3	St 43	Pulse: Floating or Cun position significant slippery of Guan deficient. - SP Xu or St Shi
Sp 9	St 36	

For the Allergy & Upper respiratory problems:

- St 35 - Eye
- St 41 - Throat
- Sp 5 - Throat Liv 4 - Throat
- LI 11 - Eye
- LI 11 to LI 7 do Ashi
- Lu 5 to 6.5 - Lungs
- Lu 7 - more throat (post nasal drip)
- Lu 9.5 - nasal congestion
- Lu 9.2 - Tonsils

Sinus Problems (more local and focused than Tai Yang - Yang Ming):

LI 4	Lu 7 or Lu 9.5
Sp 9	St 36

Allergies, hay fever, head cold,

Jue Yin - Yang Ming pattern (I / IV & II / V)
Wood-Earth imbalance. WIRY PULSE

Problems due to emotional stress - allergy, (respiratory), asthma, emotional disorders, insomnia (fall asleep but cannot stay asleep), colitis, restless leg.

Digestive problems, for IBS / Crohn's alternate with 8+1 Magic Points.

Psych: Pt can be neurotic, fast mover, look at watch constantly, not as angry or upright as Jue Yin - Shao Yang, but nervous & worry constantly.

LI 1	Pc 6	Pulse: Jittery/Neurotic pulse - rolling, wiry, floating, rapid.)
LI 4	Pc 9	
Liv 1	St 42	<i>Do Tai Yang - Yang Ming first. If improvement stopped - than do Jue Yin - Yang Ming or Pe/Kid Yang Ming</i>
Liv 4	St 45	

LI 2, 5	Pe 5, 8
Liv 5, 2	St 41, 44

Liver is more excess
Kid is more Xu Take pulse!

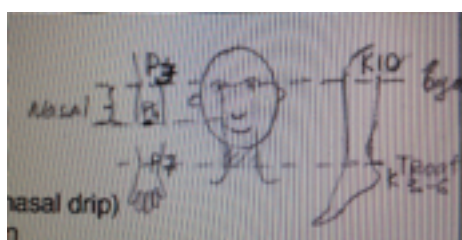
Dr Tan's 4 Magic Meridians NARROW FRONT
Pe - Kid Yang Ming pattern.

LI 1, 4	Pc 6, 9	Here check the symptoms of deficiency (Kid) or excess (Liv). Take pulse.
Kid 1, 4	St 42, 45	

From head to genitals between both sides of the St channels (St, Kid, Ren) : Eyes, face, throat, chest, stomach, intestine, uterus, bladder, , heartburn, bronchioles, stomach, heart, menstrual problems, Low abdomen pain, heart palpitations, stomach bloating, uterus cramps, menstrual pain.

More physical cause than emotional (Jue Yin - Yang Ming)
 Add Liv 1 or Liv 4 if physical conditions triggered by emotional problems or stress.

- P 3 - Eye
- P 3 - P 4 - Nasal area
- P 7 - Throat
- K 10 - Eye
- K 10 - K 8 - Nasal
- K 3 - K 6 - Throat



- Liv 8 - Eye
- Liv 8 - Liv 6 - Nasal
- Liv 4 - Throat

Uterus, Menstrual problems, Low abdomen pain.

LI 4.5	Pe 7.2
Kid 7 to 8	St 40.5

Cardio/Heart/HBP, Bronchial problems.
 Bronchial area.
 Bronchial type asthma. (Ashi around points below).

LI 3 (Ashi)	Pc 6
Kid 1 (Treats Heart)	St 40.5 (St 40 - nipples)

Asthma with phlegm

LI 6	Pe 6
Kid 2,4,7	St 40

Constipation, Diarrhoea, Sluggish digestion (Same treatment - points changed)

LI 11	P 3
K 10	St 45